

LaSalle Mariners Yacht Club
1st Annual Women's Race
June 29, 2024
Sailing Instructions

1 RULES

- 1.1** This regatta shall be governed by the rules as defined in the Racing Rules of Sailing 2021-2024(RRS), except where modified by the Notice of Race and Sailing Instructions. The Prescriptions of Sailing Canada shall apply. These can be found at www.sailing.ca

2 NOTICES TO COMPETITORS

- 2.1** Notices to competitors shall be posted on the official notice board inside the LaSalle Mariners Yacht Club. Notices will also be posted at noticeofrace.net

3 CHANGES TO SAILING INSTRUCTIONS

- 3.1** Any change to the sailing instructions will be posted before 10:00am on Saturday June 29, 2024, on the official notice board inside LMYC and at noticeofrace.net . Any changes will also be discussed at the skippers meeting.

4 SCHEDULE OF RACES

- 4.1** There will be a skippers meeting at 12:00pm where start times for individual boats will be handed out. This is a pursuit race.
4.2 The first warning signal for the first boat will be at 12:55pm.
4.3 1:00pm is the first starting signal for the first boat.

5 COURSES AND MARKS

- 5.1** Attachment A show the location and start for each course as well as the description of the marks of the course.

6 THE START

- 6.1** Races shall be started using RRS 26
6.2 The starting line will be between a staff displaying an orange flag on the committee boat and the course side of an orange mark. Please see Attachment A for start areas.

7 THE FINISH

- 7.1** The finish line will be between a staff displaying a blue flag on the race committee vessel and the course side of an orange mark.

8 TIME LIMITS

- 8.1** There shall be no time limit. The race committee may leave the station 5 hours after the first warning signal is made. Any boat finishing after this time, must take their own time and report it to the race committee as well as the name of the boat ahead of them and the boat behind them.

9 PROTESTS AND REQUESTS FOR REDRESS

- 9.1 Hearing request forms will be available on the official notice board. Any offending boat is encouraged to take the appropriate penalty as per RRS at the time of the infraction.
- 9.2 The protest time limit is 60 minutes after the last boat has finished.
- 9.3 Notices will be posted no later than 30 minutes after the protest time limit to inform the competitors of hearings in which they are parties or named as witnesses and where the hearings will be held.
- 9.4 All provisions of RRS60 shall apply. Awards for any class and the overall race will not be presented where a pending protest may affect an award place.

10 INSURANCE

- 10.1 Each participating boat shall be insured with valid third-party insurance. Proof of insurance shall be provided as part of the registration requirements.

11 DISCLAIMERS OF LIABILITY

- 11.1 Competitors participate in this regatta entirely at their own risk. See RRS 3 Decision to race. The organizing authority will not accept any liability for material damage, or personal injury, or death sustained in conjunction with, prior to, during, or after the regatta.

12 RADIO COMMUNICATIONS

- 12.1 The race committee will monitor VHF Channel 68 and make courtesy broadcasts for each boat's start time.
- 12.2 While racing, except in an emergency, a boat shall not make voice or data transmissions and shall not receive voice or data communication that is not available to all boats. This restriction also applies to mobile telephones.
- 12.3 If a boat retires from the race, it is the boat's responsibility to inform the race committee as soon as safely possible, preferably over VHF channel 68.

14 FURTHER INFORMATION

- 14.1 For further information, please reach out to lmocracing@gmail.com

Attachment A



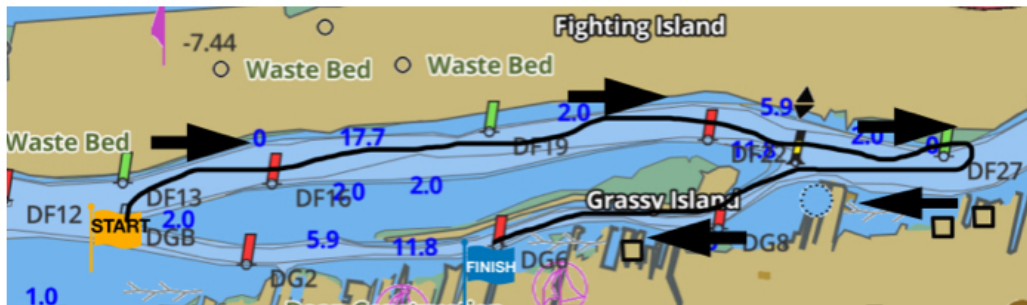
Course 1

Start at DF27, head downriver passing through the west side of Grassy Island and through the cut. Continue downriver and head towards Ballard's Reef channel lighted buoy 81 and leave to port. Continue downriver, then round Ballard's Reef channel light D77 to port. Head upriver leaving DF2 to starboard, then DF4 to starboard. Leave Turkey Island to STARBOARD and continue downriver leaving DGB or Port and finish between the RC and DG2. 9.35NM

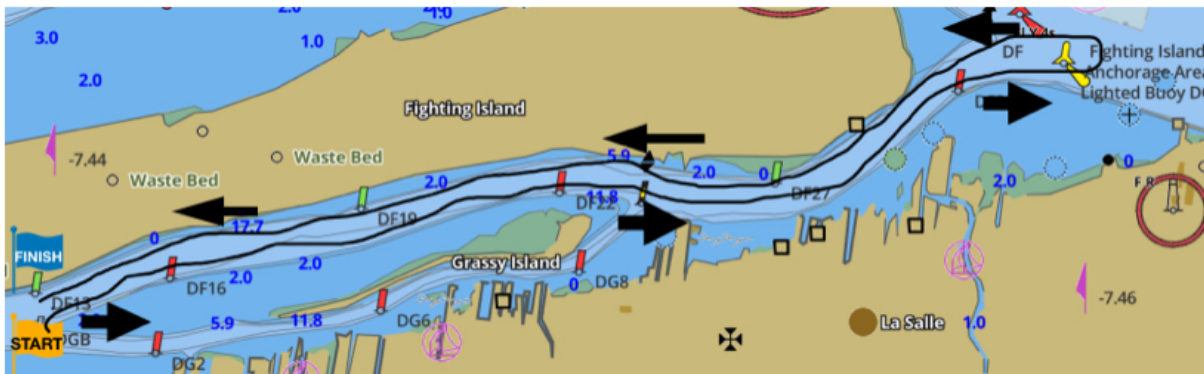


Course 2

Start at DF27 then head downriver passing by the west side of Grassy Island leaving Grassy Island then DGB to port. Continue downriver through the cut to DF3 rounding to port then head upriver leaving Turkey Island to starboard, heading through the cut and finishing at DGB. 6.38NM



Course 3 Start at DGB and head upriver along the west side of Grassy Island to Green DF27 rounding to starboard. Then head downriver along the east side of Grassy Island, leaving Grassy Island to Starboard to finish between Red DG6 and the RC boat. 3.65NM



Course 4 Start at DGB and head upriver along the west side of Grassy Island leaving Grassy Island to Starboard to Fighting Island Anchorage Area Lighted Buoy DQ and round to Port. Then head downriver leaving Grassy Island to Port. The finish line will be between the RC boat and DGB 6.57NM